

Paper Reference(s) 1BI0/2F
Pearson Edexcel Level 1/Level 2 GCSE (9–1)

Biology
Paper 2
Foundation Tier

Monday 1 June 2020 – Afternoon

Time: 1 hour 45 minutes plus your additional time allowance

Diagram Booklet

In the boxes below, write your name, centre number and candidate number.

Surname					
Other names					
Centre Number					
Candidate Number					

INSTRUCTIONS

There may be spare copies of some diagrams in case you need them.

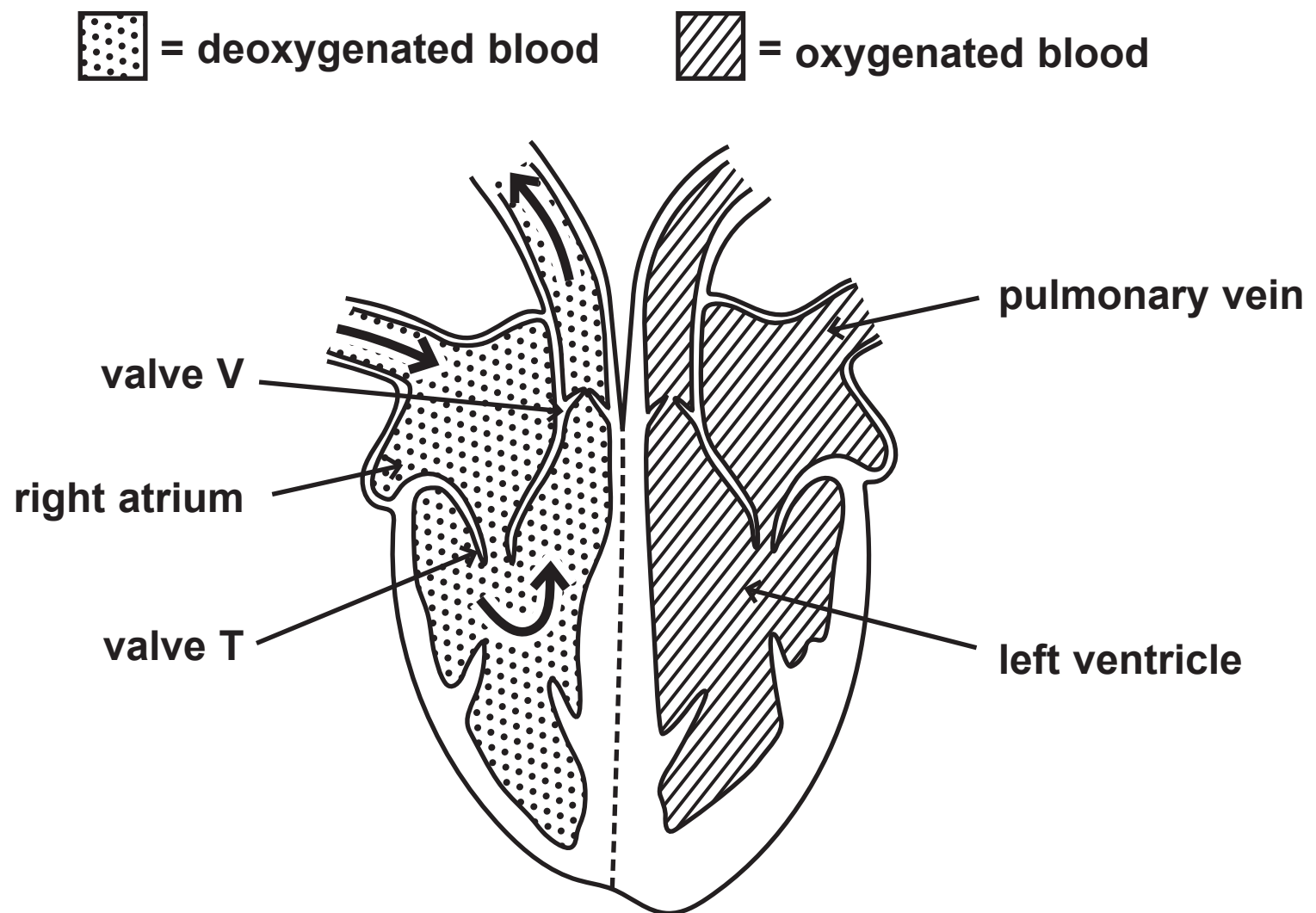
**THIS DIAGRAM BOOKLET *MUST* BE RETURNED WITH THE
QUESTION PAPER AT THE END OF THE EXAMINATION.**

Contents**Page**

4	Question 1(a)(i)
5	Question 1(a)(i) (Spare copy)
6	Question 1(a)(iii)
7	Question 1(a)(iii) (Spare copy)
8	Question 1(b)
9	Question 2
10	Question 2(c)
11	Question 2(c)(ii)
12	Question 2(c)(ii) (Spare copy)
13	Question 2(d)
14	Question 3(a)
15	Question 3(a) (Spare copy)
16	Question 3(b)
17	Question 3(b)
18	Question 4(a)
19	Question 4(a)
20	Question 4(a) (Spare copy)
21	Question 4(b)
22	Question 5(b)
23	Question 5(c)(ii)
24	Question 6(a)
25	Question 6(a)(ii)
26	Question 6(b) and 6(c)
27	Question 7
28	Question 7(b)(ii)
29	Question 8
30	Question 8(c)
31	Question 9(a)
32	Question 9(b)
33	Question 9(b)
34	Question 9(c)
35	Question 10(a)
36	Question 10(c)
37	Question 10(d)

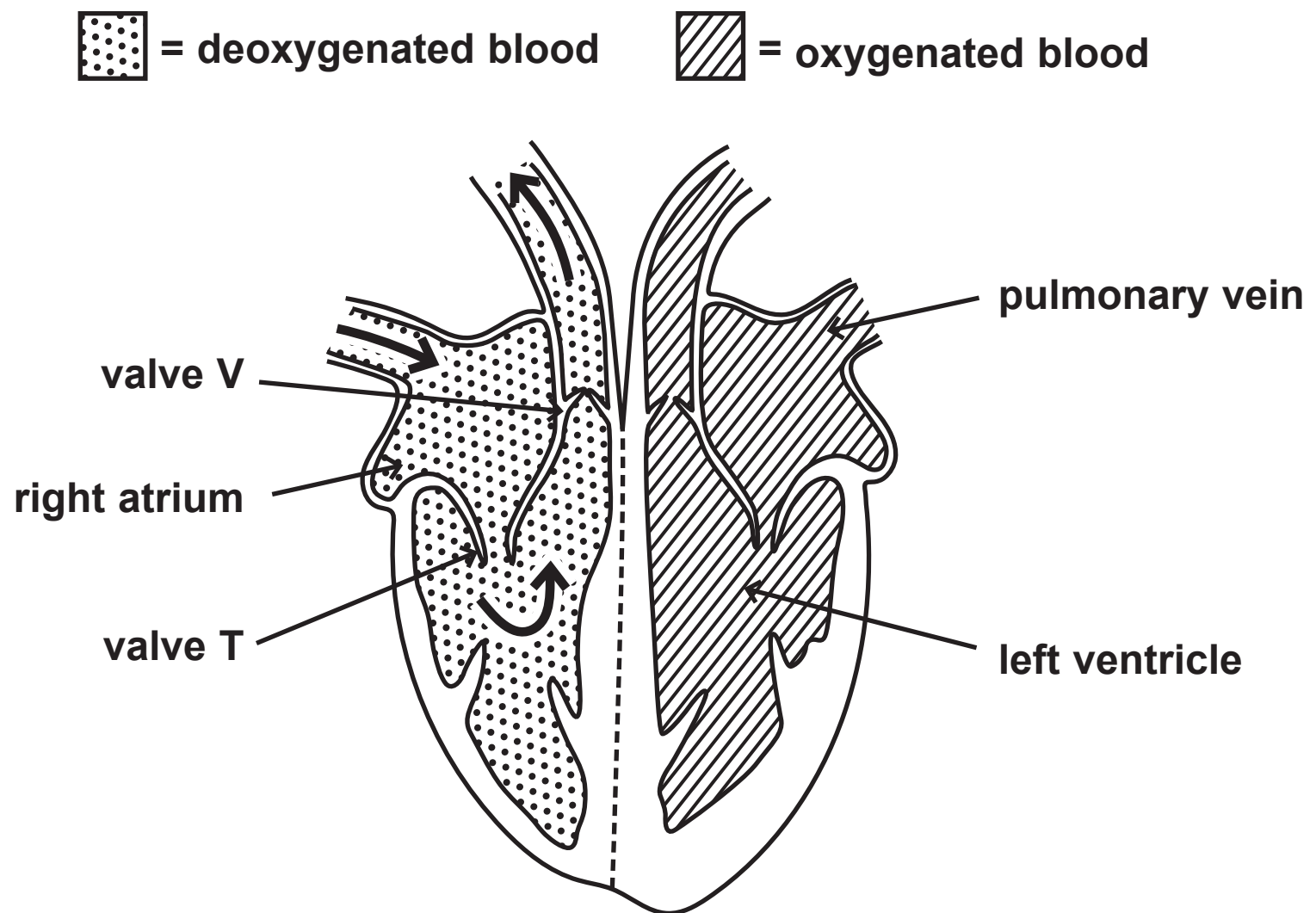
Question 1(a)(i)

Figure 1



Question 1(a)(i) (Spare copy)

Figure 1



Question 1(a)(iii)

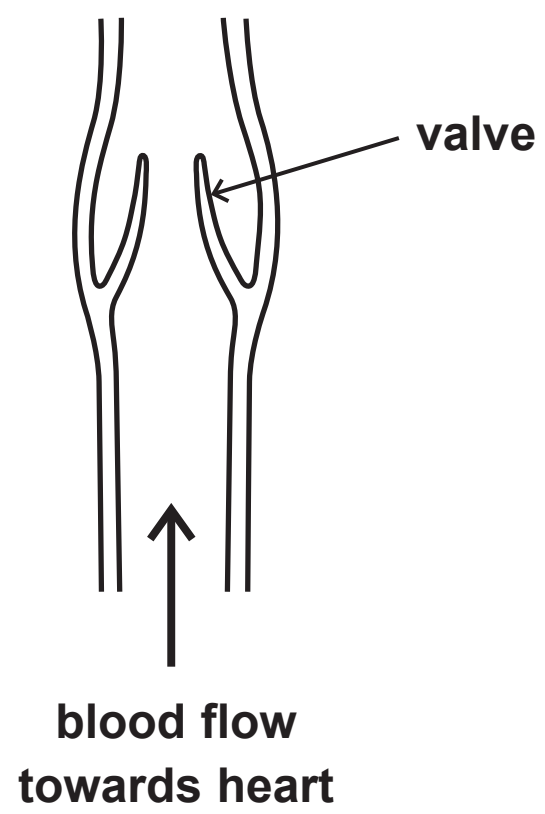
structure	function
pulmonary vein	<ul style="list-style-type: none">carries deoxygenated blood
	<ul style="list-style-type: none">forces blood towards body organs
	<ul style="list-style-type: none">carries blood from the lungs to the heart
left ventricle	<ul style="list-style-type: none">takes blood to the right side of the heart
	<ul style="list-style-type: none">forces blood towards the lungs

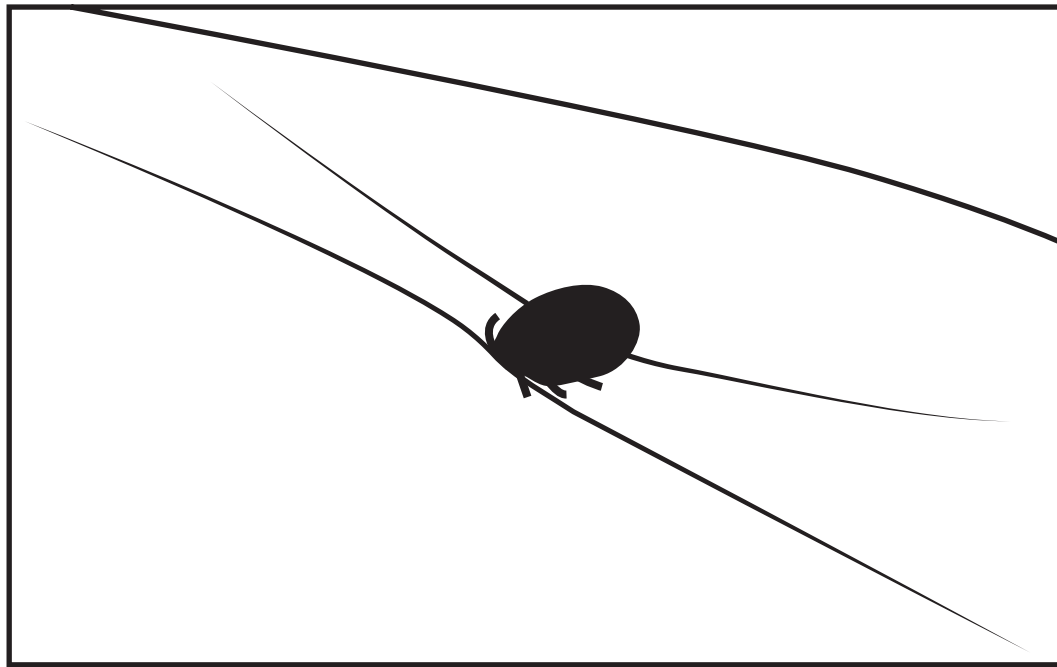
Question 1(a)(iii) (Spare copy)

structure	function
pulmonary vein	carries deoxygenated blood
	forces blood towards body organs
	carries blood from the lungs to the heart
left ventricle	takes blood to the right side of the heart
	forces blood towards the lungs

Question 1(b)

Figure 2

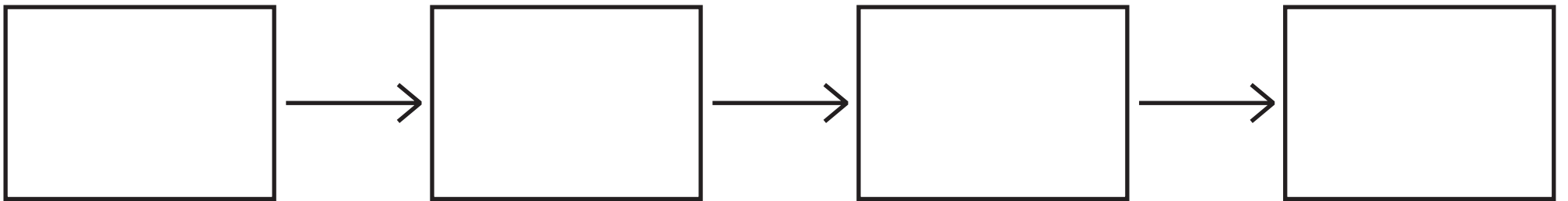


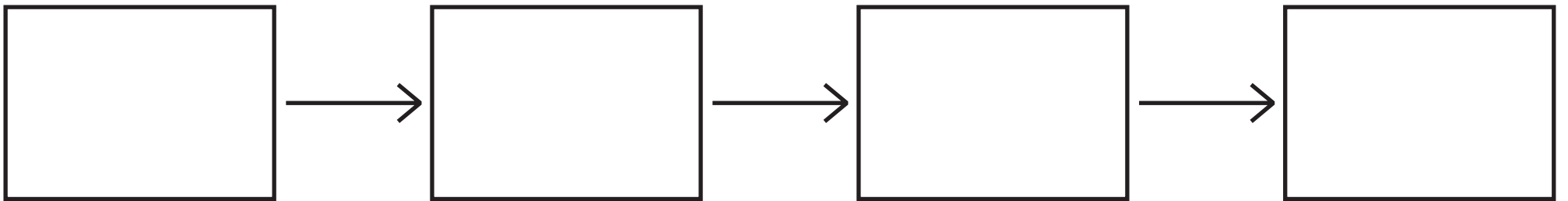
Question 2**Figure 3**

Question 2(c)

Figure 4

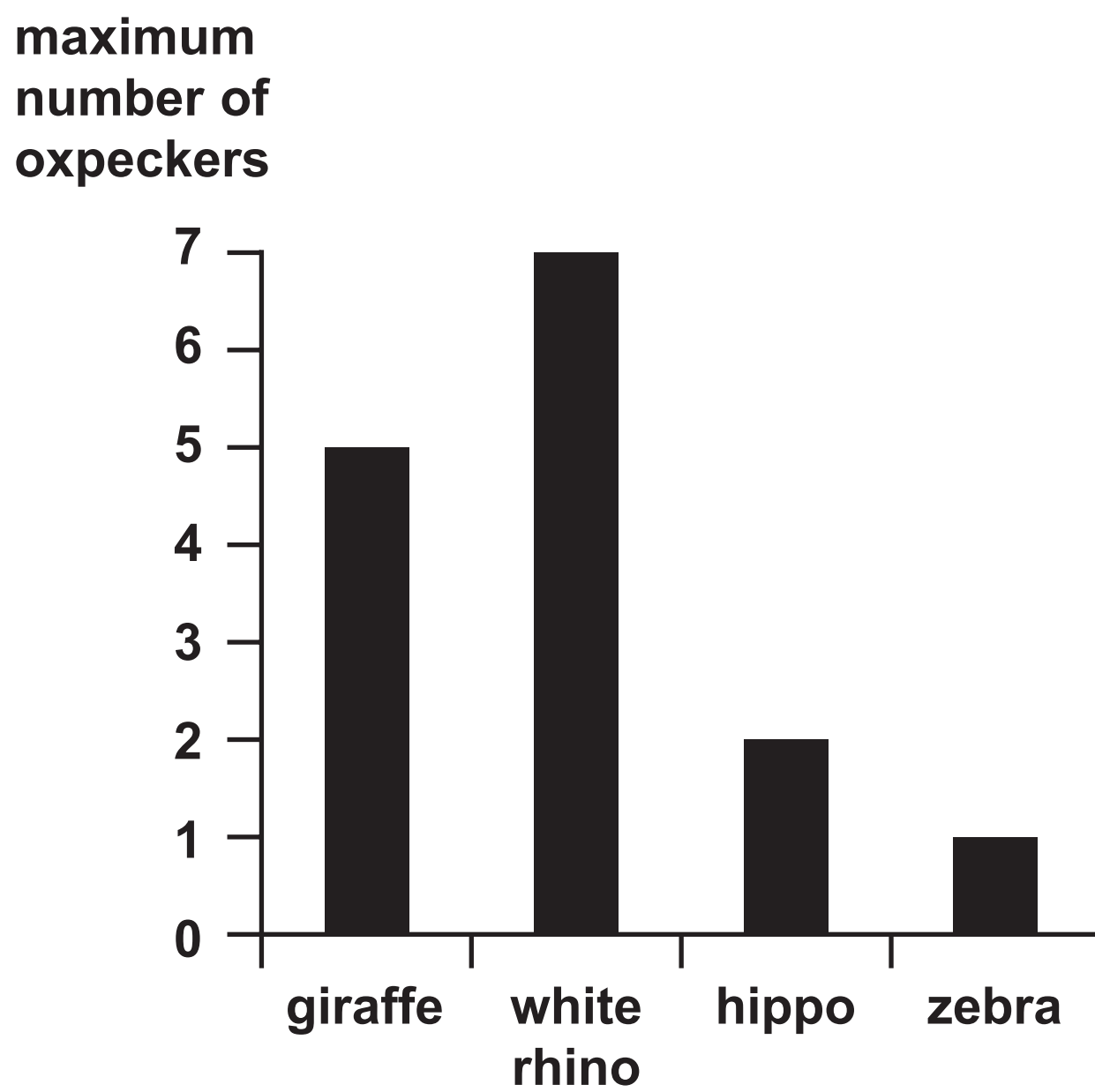


Question 2(c)(ii)

Question 2(c)(ii) (Spare copy)

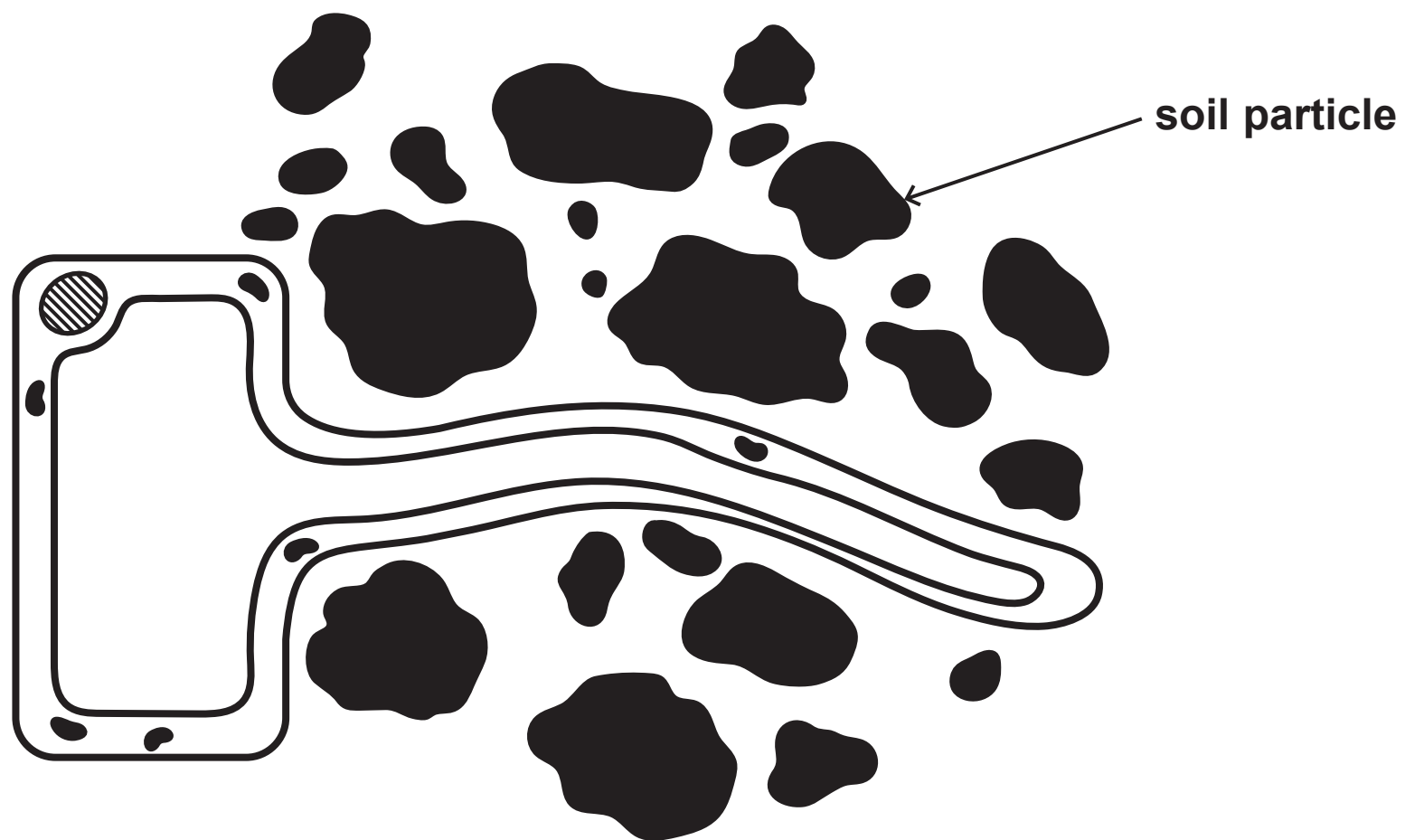
Question 2(d)

Figure 5



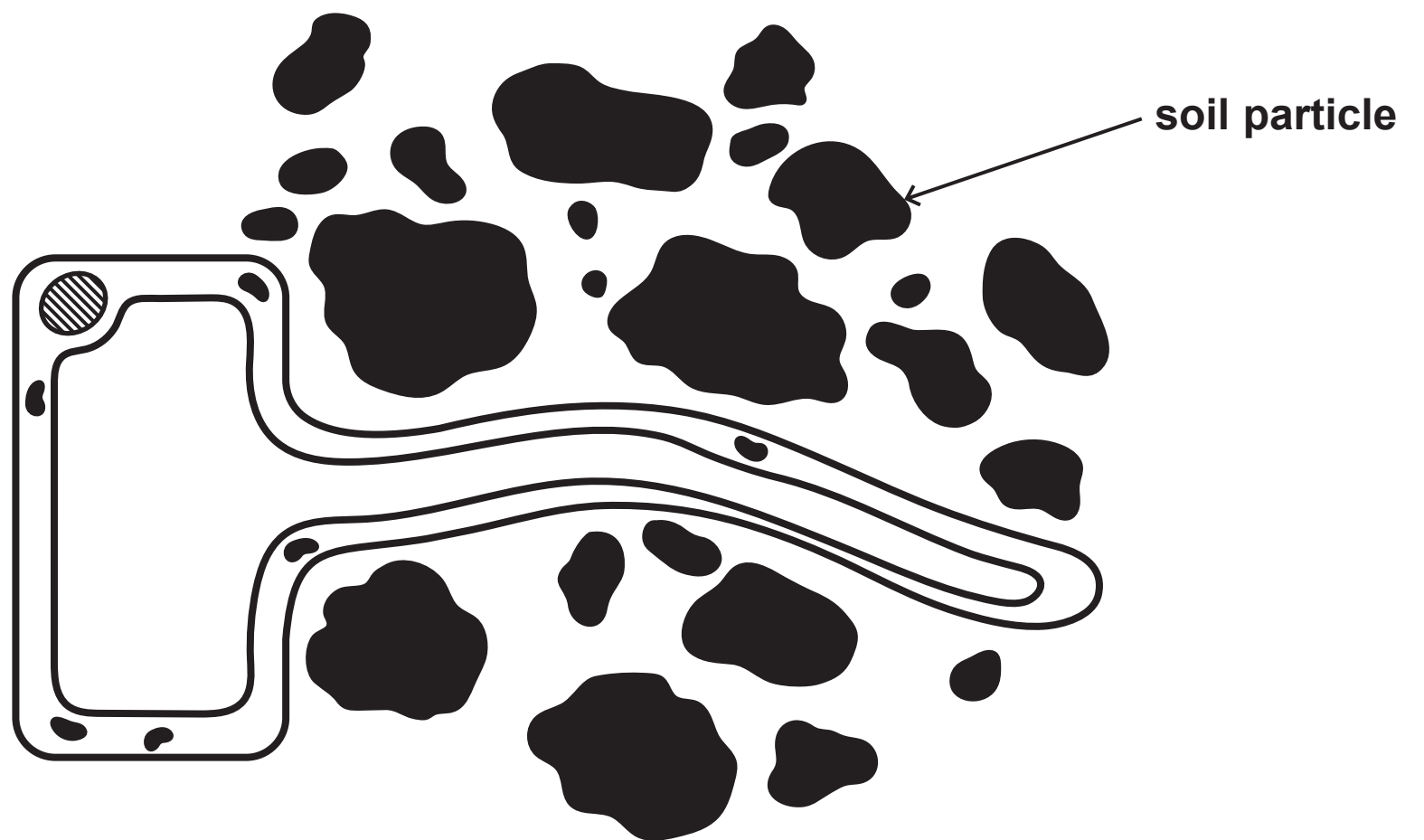
Question 3(a)

Figure 6



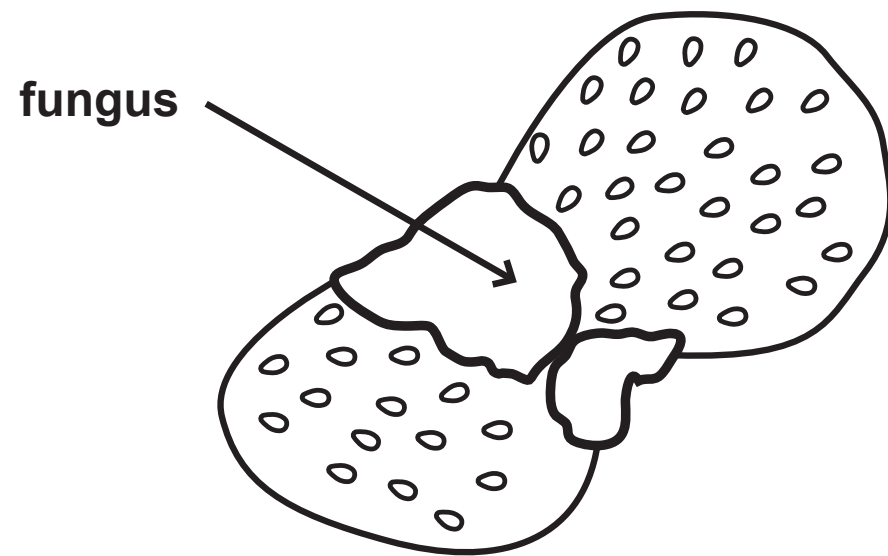
Question 3(a) (Spare copy)

Figure 6



Question 3(b)

Figure 7



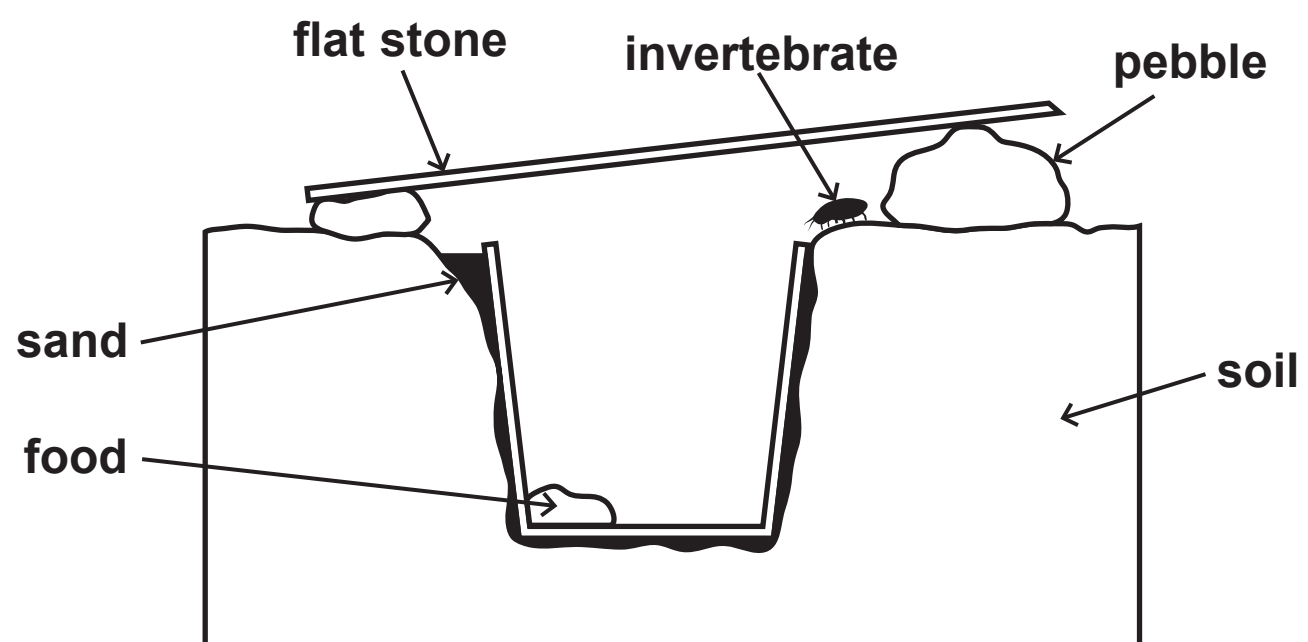
Question 3(b)

Figure 8

temperature in °C	area of fungus after 5 days in cm ²
5	8
10	25
15	36
20	48
25	60
30	72

Question 4(a)

Figure 9



Question 4(a)

5

--

--

--

--

Question 4(a) (Spare copy)

5

--

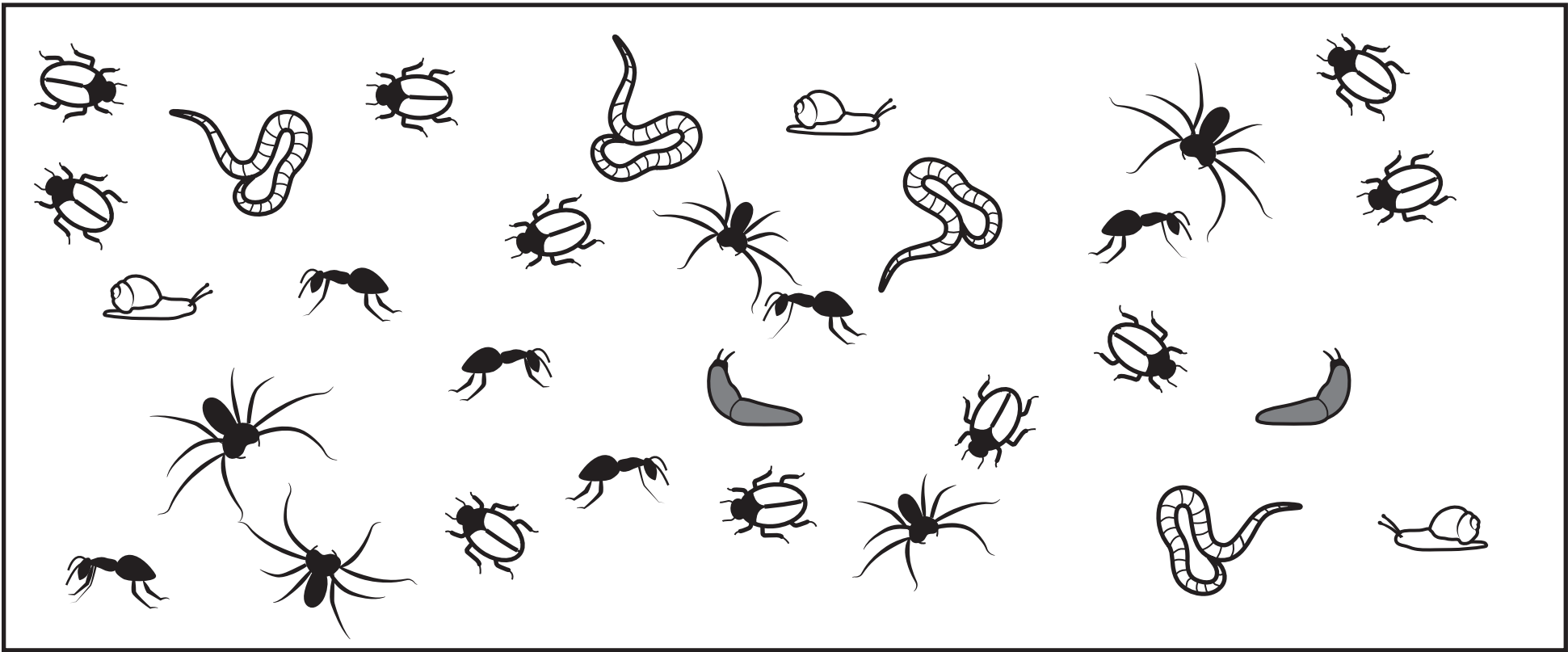
--







--

--

Question 4(b)

Figure 10



key					
					
beetle	snail	ant	spider	slug	worm

Question 5(b)

Figure 11

person	mass in kilograms	height in metres	BMI
A	110	2·0	?
B	85	1·5	38

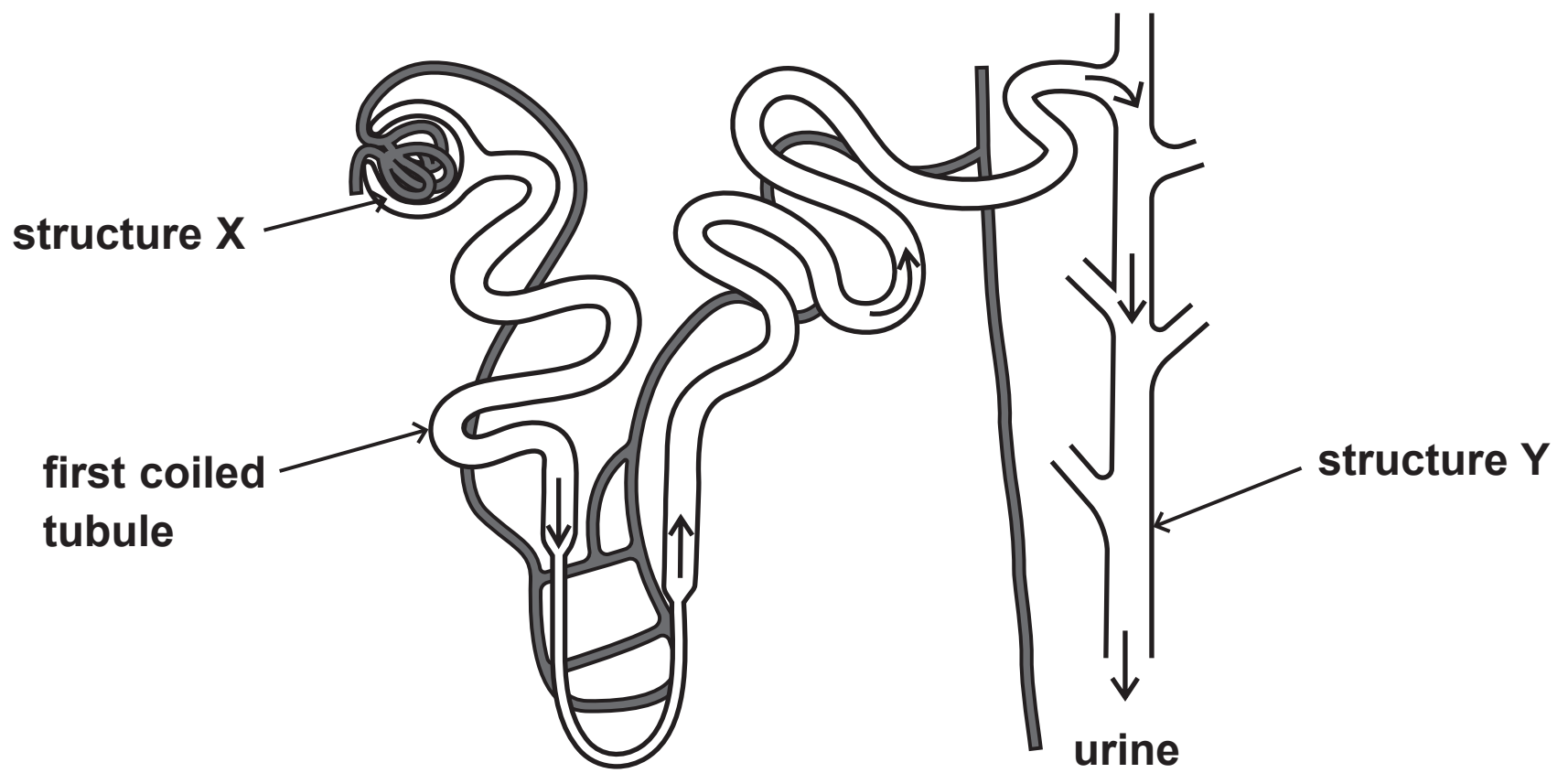
Question 5(c)(ii)

Figure 12

activity	speed in km per hour	respiration rate in kJ per minute
sleeping	0	3
running slowly	8	90
running quickly	12	130

Question 6(a)

Figure 13



Question 6(a)(ii)

Figure 14

filtrate	mean concentration of glucose in millimoles per litre
filtrate in the start of first coiled tubule	6
filtrate in the end of first coiled tubule	0

Question 6(b) and 6(c)

Figure 15

year	concentration of protein in urine in arbitrary units	
	person A (with healthy kidneys)	person B (with kidney disease)
2015	2	25
2016	4	37
2017	5	57
2018	4	79
2019	3	106

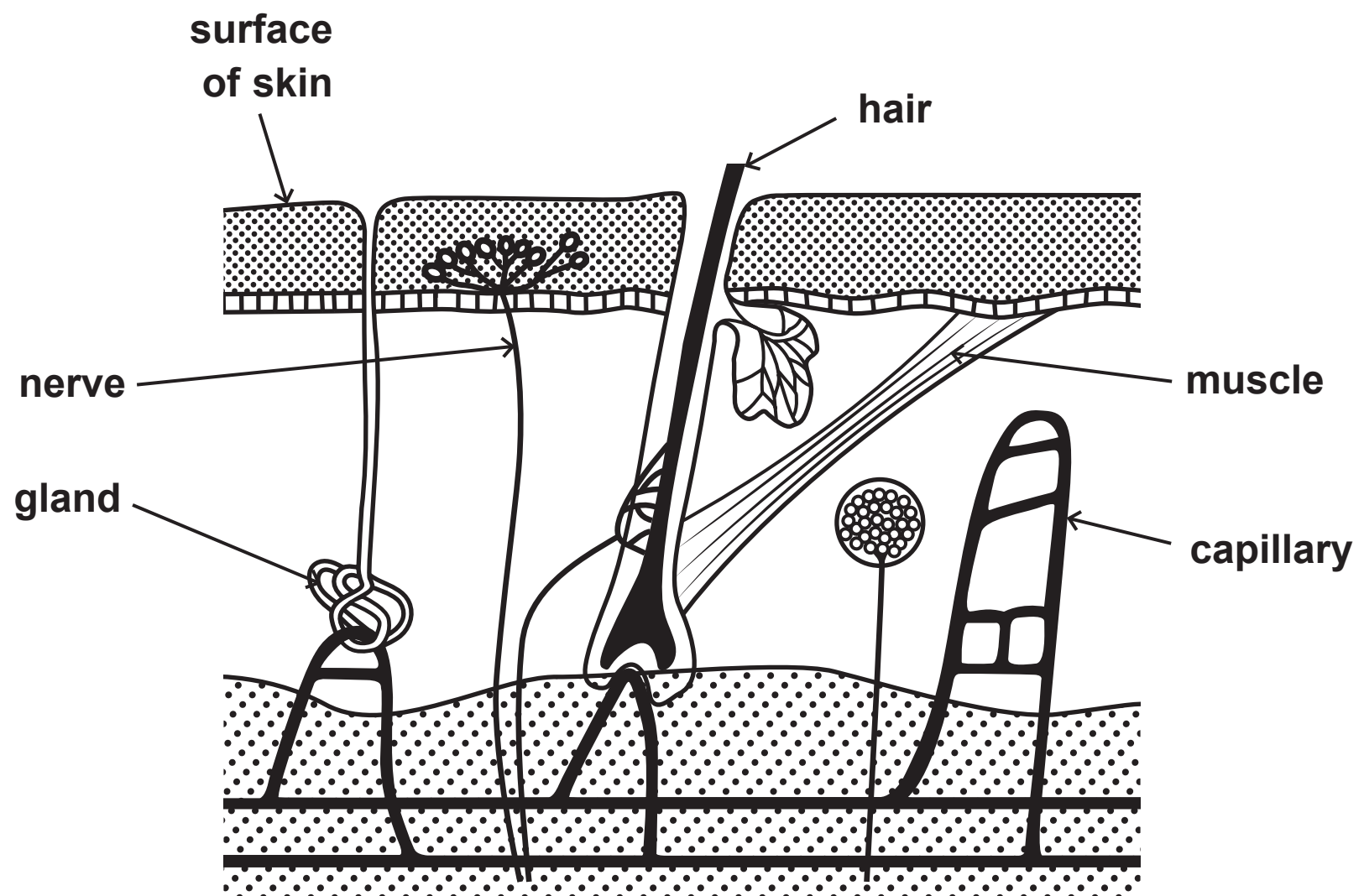
Question 7

Figure 16

substance in sweat	concentration in mmol per dm ³	
	patient A	patient B
urea	8·0	32·0
glucose	0·5	0·4
sodium ions	40·0	36·0
chloride ions	35·0	32·0

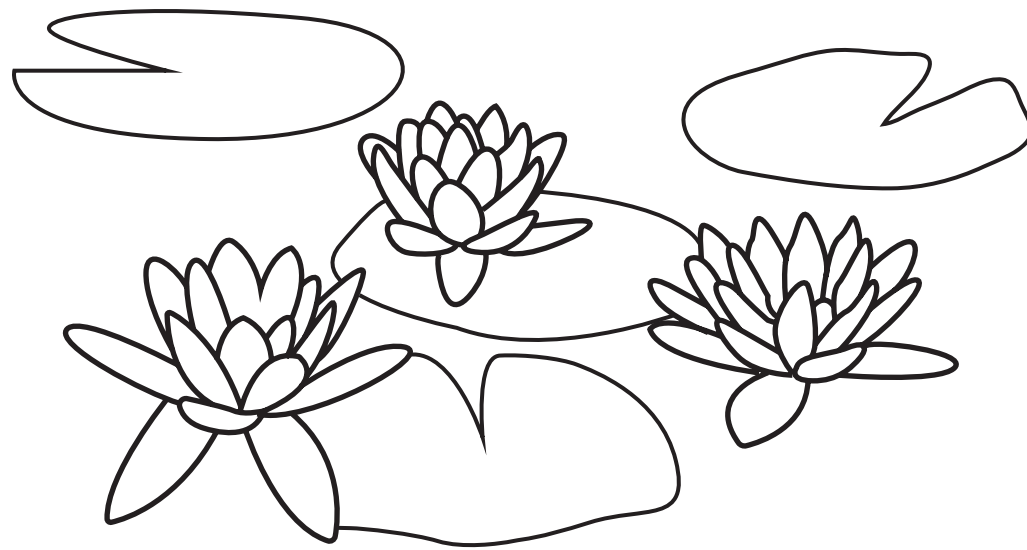
Question 7(b)(i)

Figure 17



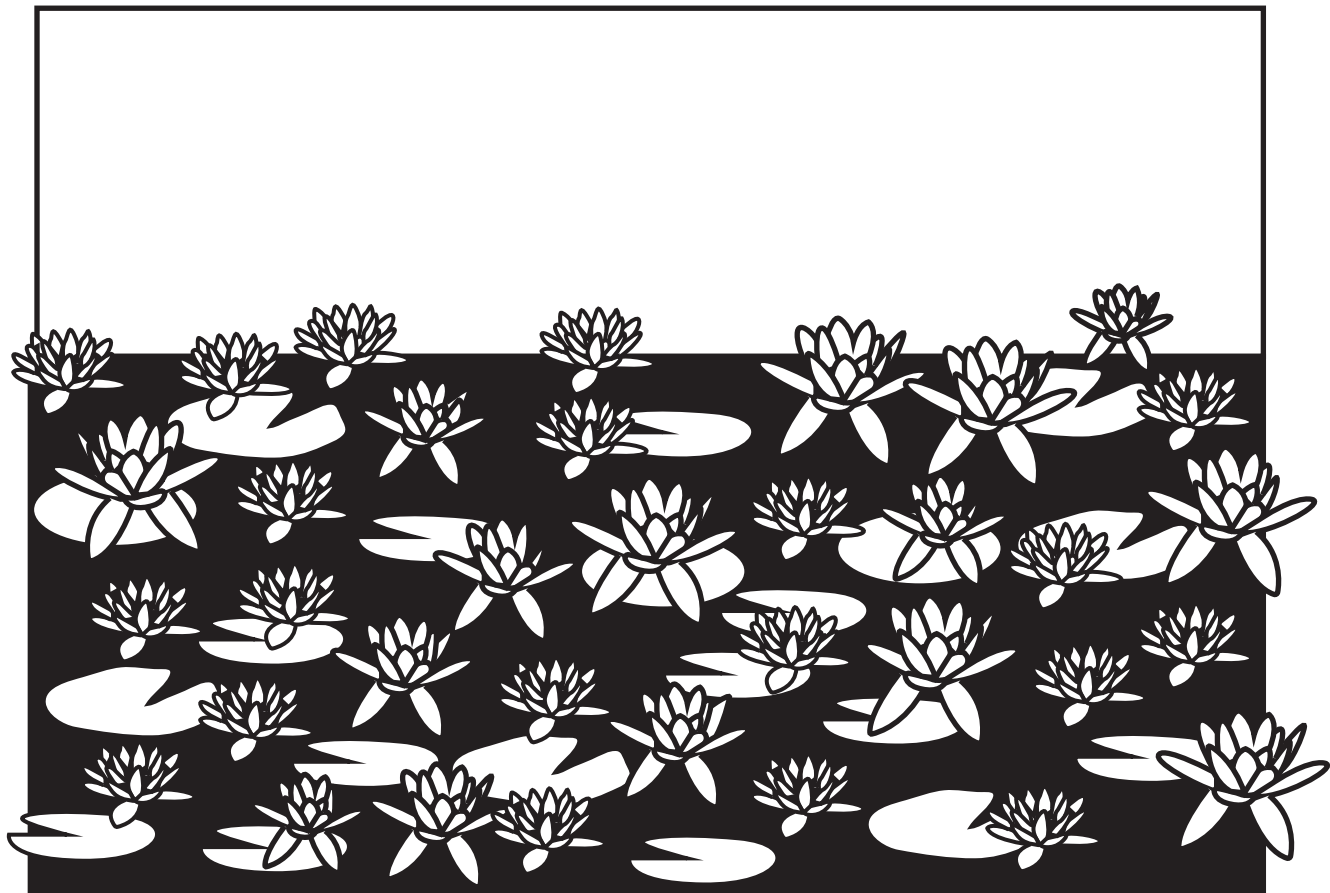
Question 8

Figure 18



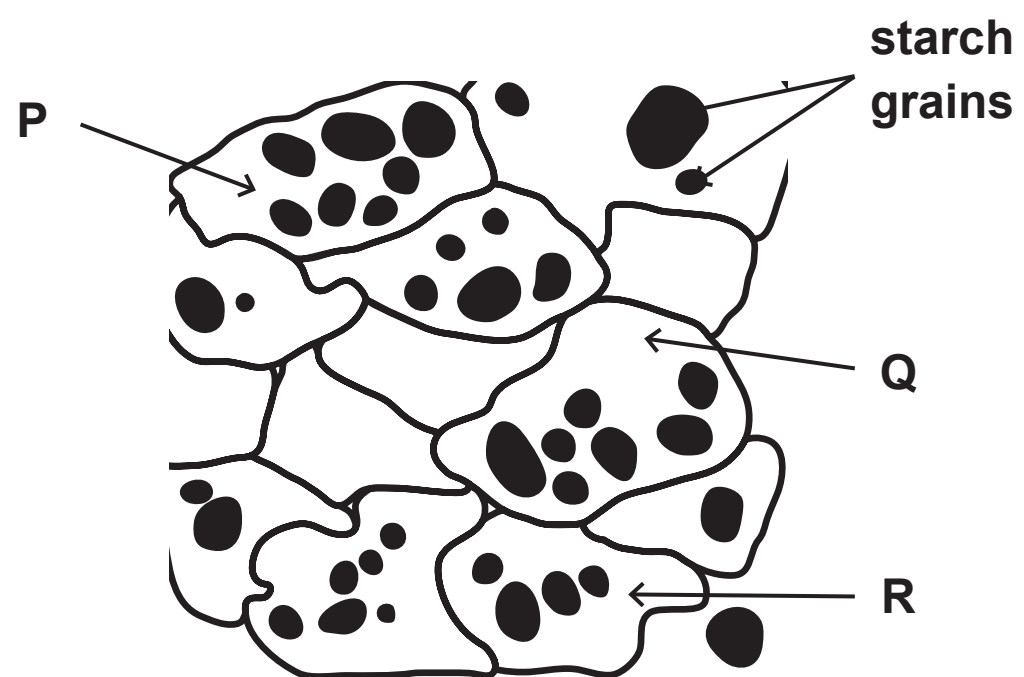
Question 8(c)

Figure 19



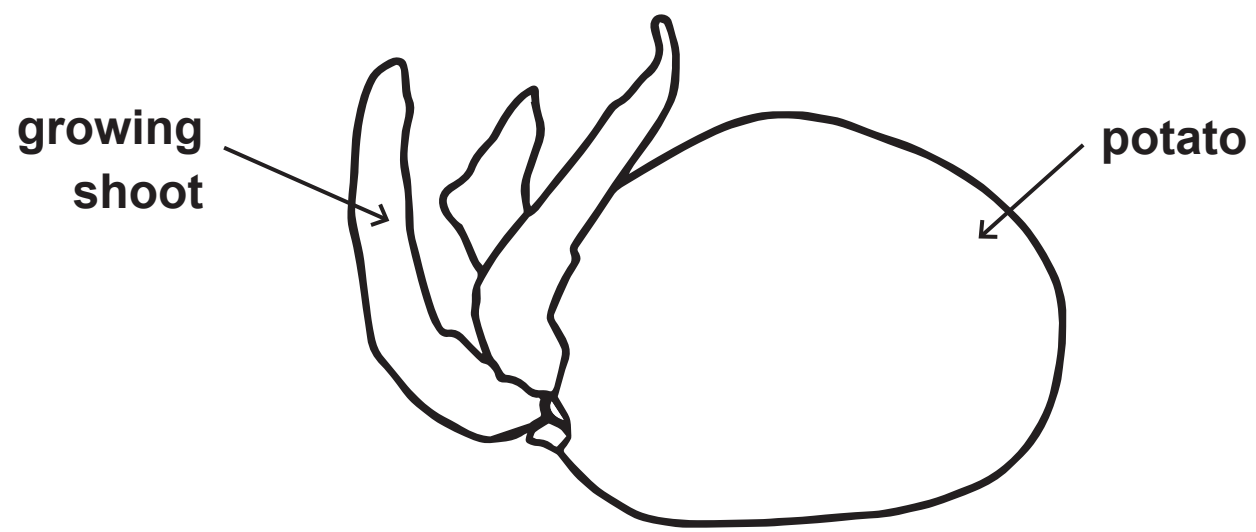
Question 9(a)

Figure 20



Question 9(b)

Figure 21



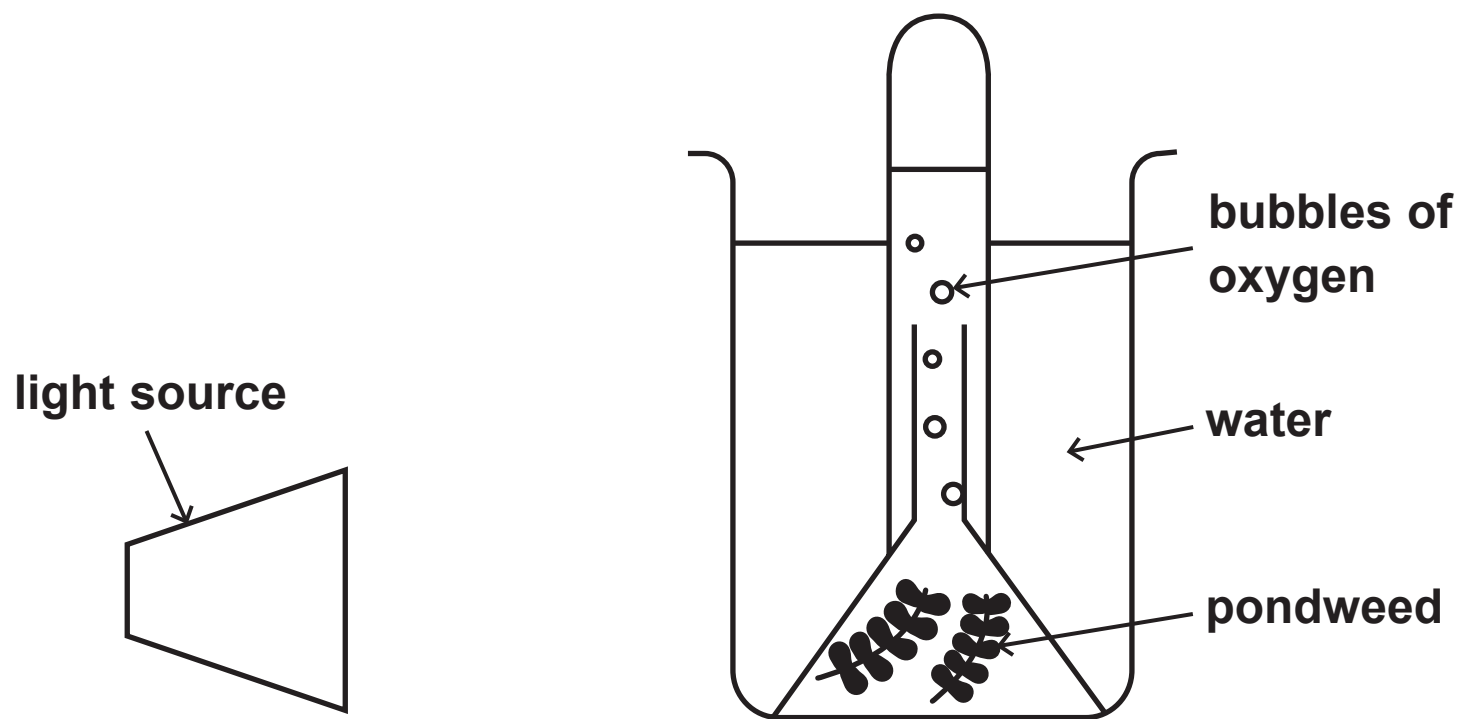
Question 9(b)

Figure 22

potato	time after placing in the dark in weeks	mean length of starch grains in μm
1	0	64
2	5	50
3	10	30

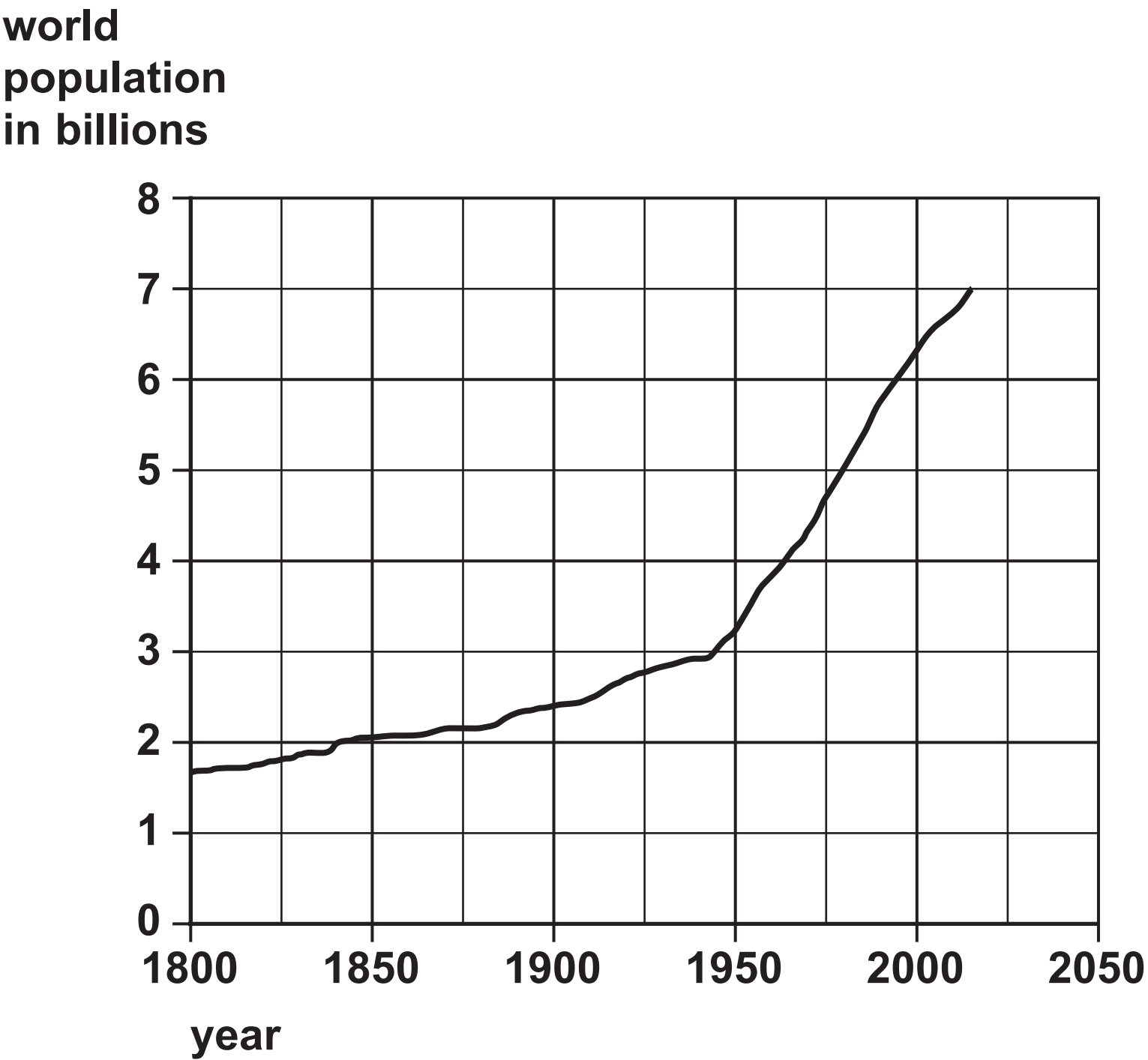
Question 9(c)

Figure 23



Question 10(a)

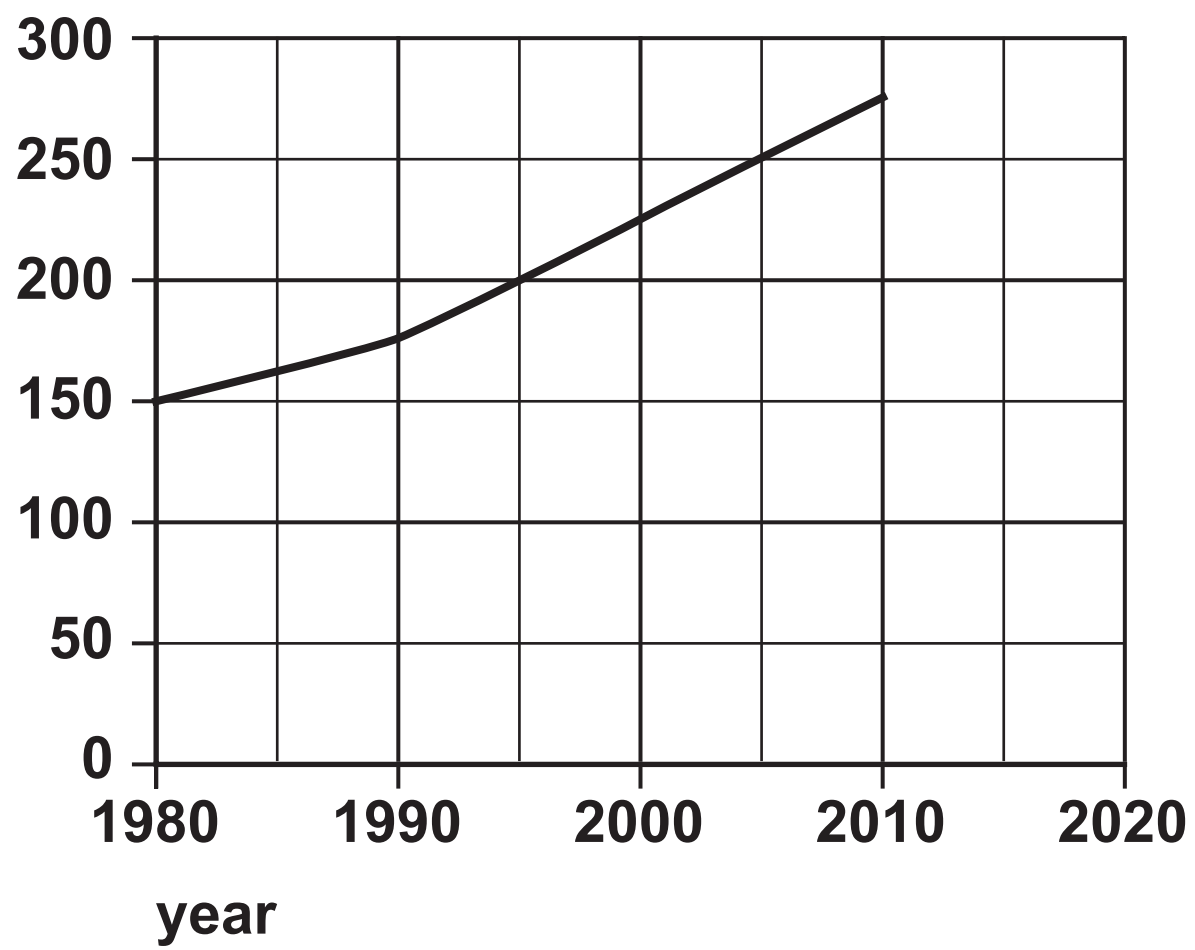
Figure 24



Question 10(c)

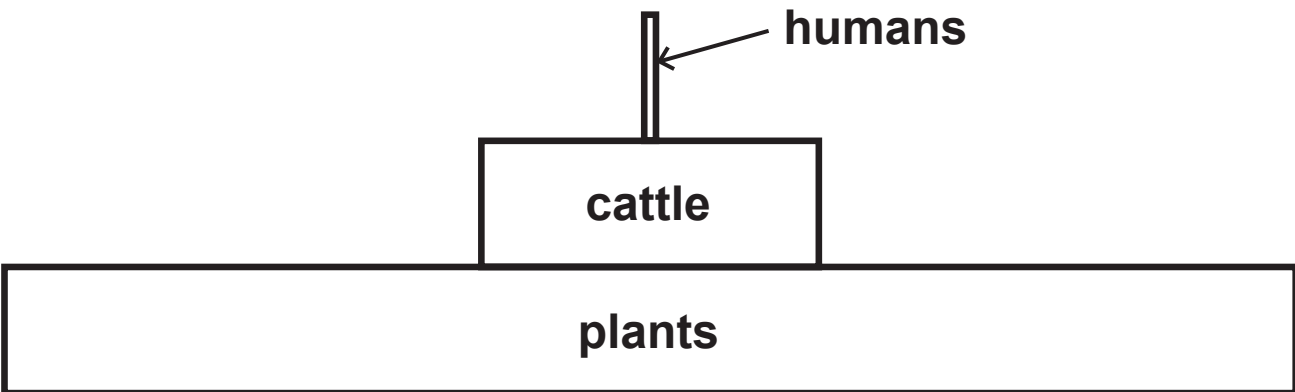
Figure 25

mass of
meat eaten
in the world
in millions
of tonnes



Question 10(d)

Figure 26



Question 2

© IanRedding/Shutterstock

Question 2(c)

© MartinMaritz/Shutterstock

Question 3(b)

© Catherine Eckert/Shutterstock

Question 8

© Oleksandr Shymanskyi/123RF

Question 8(c)

© lynn gladwell/123RF

Question 9(b)

© rodimov/Shutterstock